



ULTRA-MAGNETIC



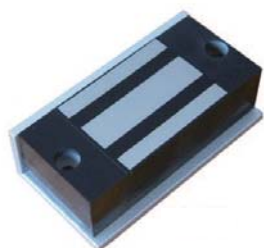
MAGNETIC LOCK

Electromagnetic locks are widely used in commercial and industrial applications. The lock is usually mounted on the header above the door and the armature is usually mounted on the door.

BSI provides full line of electromagnetic locks for all types of doors. Our models are designed to secure any type of door or gate that closes against a fixed stop. All of our locks components are carefully designed, manufactured and tested to ensure superior quality.

Mini MAGNETIC LOCK

DSL80



DSL180



General Feature

- ★ DIMENSIONS:
Magnet (DSL80): 70mmLx31mmWx18mmD
Magnet (DSL180): 100mmLx38mmWx28mmD
Armature Plate(DSL80): 62mmLx32mmWx8mmT
Armature Plate(DSL180):75mmLx32mmWx52mmT
- ★ Dual Voltage: 12/24VDC
- ★ Current Draw(DSL80): 100mA/12VDC, 50mA/24VDC
Current Draw(DSL180): 200mA/12VDC, 100mA/24VDC
- ★ Surface Mounted
- ★ Holding Force: (DSL80)about 80LBS, (DSL180) about 180lbs
- ★ Built-in Voltage Spike Suppressor

Application

